

ProColor P5UC Series



**Interactive
Intelligent Panel**

Delivers Brilliant Instruction on the LED-backlit, 4K Ultra HD 50-Touch and Pen Interactive Intelligent Panel.

Students will see everything with Boxlight's vibrant ProColor interactive intelligent panel. Choose from the 65", 75" and 86" models, offering all the features of a touch-driven interactive whiteboard with the simplicity and elegance of a state-of-the-art, ultra-high-definition display.

- Lessons have more contrast and are easier to see—even in large classrooms.
- Teachers can use and save content directly from their Google Drive or Office 365 cloud storage systems.
- Up to 50 single-point touch users or 25 dual-touch and gestures users can work simultaneously with Touch 360° interactivity, driving collaborative learning.
- Built-in 8 array mic. and 50M automatic focus camera.

* Multi-touch available on Windows, Android & Mac. Chrome and Linux are single touch.

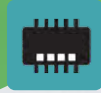
8-array Microphone 50M Camera

What's new?

Android 14

8 core CPU

8G RAM/128G ROM



Quick Notes



Palm Rejection



AI Tools



Energy Saving

40W Soundbar

Take notes on the go

The IFP features an "Quick Notes" function, allowing users to write and annotate directly on the screen as soon as they pick up the stylus pen, without the need for additional setup. This feature enhances efficiency and streamlines presentations or lessons, making it more interactive and user-friendly.



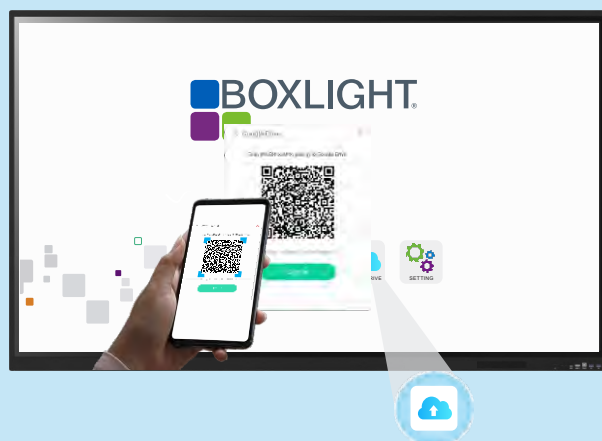
Palm rejection

The palm rejection feature allows users to rest their hand on the screen while writing or drawing without unintended marks. This ensures a smooth and accurate touch experience, perfect for detailed work, presentations, or interactive lessons.



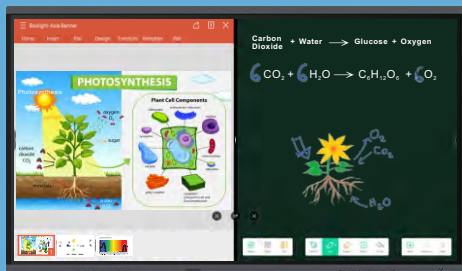
Easy Access Cloud Accounts (EACA)

As personal data can be stored directly in the cloud, our cloud drive can allow you scan QR code with your phone to get accessible credentials instead of typing your ID and password on the screen. In this way, you really carry nothing but using the cloud files directly on the class.



Versatile Display Modes

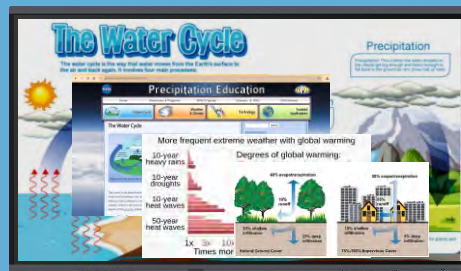
Featuring split-screen(PBP), picture in picture(PIP) and multi-window modes, enabling immersive experiences for classrooms or video conferences. Enhance learning and interaction effortlessly.



Split-Screen



Picture in Picture



Multi-Window

AI Tools (Optional)

Diverse and scalable AI tools enhance classroom presentations and integrate with numerous apps, helping you work efficiently.



AI Search

Provide a variety of knowledgeable answers.



Live Subtitles

Converts system audio into subtitles, very useful when learning languages.



Outline Navigator

When playing videos, an outline is displayed and allows you to quickly jump to any section of interest.

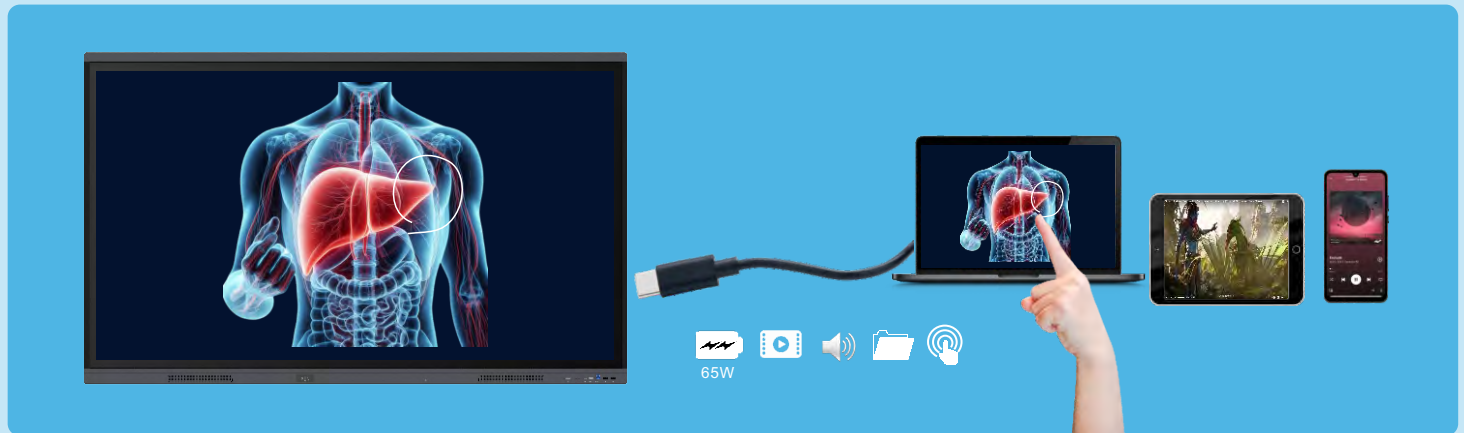


AI Painter

Generate sketch from lines/curves, or generate a detailed artwork from sketch.

Plug and play USB-C

Easily achieve two-way touch control, area network sharing, 65W fast charging, and audio and video transmission through USB cable connection. Teachers can take advantage of the plug-and-play advantage and immediately use their personal devices to start teaching, whiteboard writing, group collaboration and other classroom activities.



More Than Just a Display

Touch interactivity and collaboration are brought to life with the brilliance of our ultra-high definition Android flat panels. Combined with our powerful applications and software, learning has never been so engaging.

Note whiteboard

Note provides a powerful whiteboard equipped with a variety of tools and AI handwriting recognition in multiple languages, aiming to make the course more attractive Interactive teaching: Whether it is face-to-face teaching or online teaching, Note allows students to more deeply participate in the use of whiteboards.

- **Offers diverse writing techniques to make lessons more dynamic.**
 - AI handwriting recognition in multiple languages
 - Magic pen: automatically recognized handwriting and transfer into patterns
 - Support multiple operations on selected objects
- **Provides an abundance of tools and resources to cover a wide range of subjects.**
 - Professional ruler and compass tools
 - Periodic table of elements
 - PhET subject resources
- **Supports various scenarios to accommodate different teaching environments.**
 - Planet: explore the solar system in a single canvas
 - Support inserting cloud drive resources into Note
 - Picture & video online searching



Screen Share Screen Mirroring

Bytello Share is a powerful, WiFi-based screen sharing solution that shares screens to a large display or casting contents to mobile device. With “two-way touch control”, enhancing collaboration and productivity in classrooms, meetings and presentations.

- Two way sharing (casting to panel or view panel from laptop)
- Compatible with Well-Known Protocols (Airplay, Miracast, Chromecast, etc.)
- Flexible Screen Presentation (up to 9 screens)
- Everything under control (advanced permission management, privacy window filtering)
- Sharing group for group discussion
- P2P/WLAN Screen Sharing (no need to install app)



Bytello Class Pro Hybrid and Remote Learning

Class Pro focuses on teaching scenarios and facilitates interactive teaching through collaborative classrooms. Additionally, it supports personalized post-class learning and utilizes audio and video tools for remote collaborative activities.

- **Preparation Before Class**
 - Enhancing lesson planning efficiency with AI
 - Courseware & Quiz generation
- **Seamless integration with popular education system**
 - File format compatibility & Bi-directional link to LMS
- **Teaching & Learning During Class**
 - Take care of everyone
 - Activities with full participation & screenlock for students
 - Follow the teacher anytime, anywhere
 - Collaborate in real time & live session
 - Take self-study notes freely
 - Automatically saves all data in class and allows students to
 - freely review from the student side.



Bytello AMS Account Management

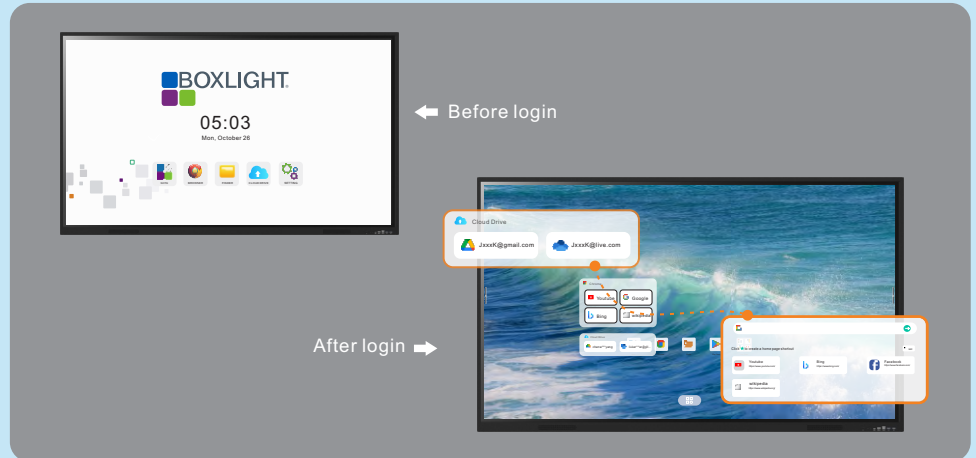
Effortless and secure, logging in has never been better.

- **Faster and way more secure login method than password entry**

AMS(Account Manage System) is for IT teams to manage school IFP assets. To help IT to grant use permit for onboarding new staff.

- **Access the familiar Google software suite on IFP**

Single sign-in to access Google software suite on IFP. Say goodbye to the hassle of multiple logins and passwords.



mimio DMS Device Management

Effortlessly manage your IFP in the classroom through centralized control with mimio DMS.

Mimio DMS is cloud-based, admins can manage, manage, update, schedule and broadcast simultaneously on multiple interactive displays from any location, ensuring efficient, streamlined operations.

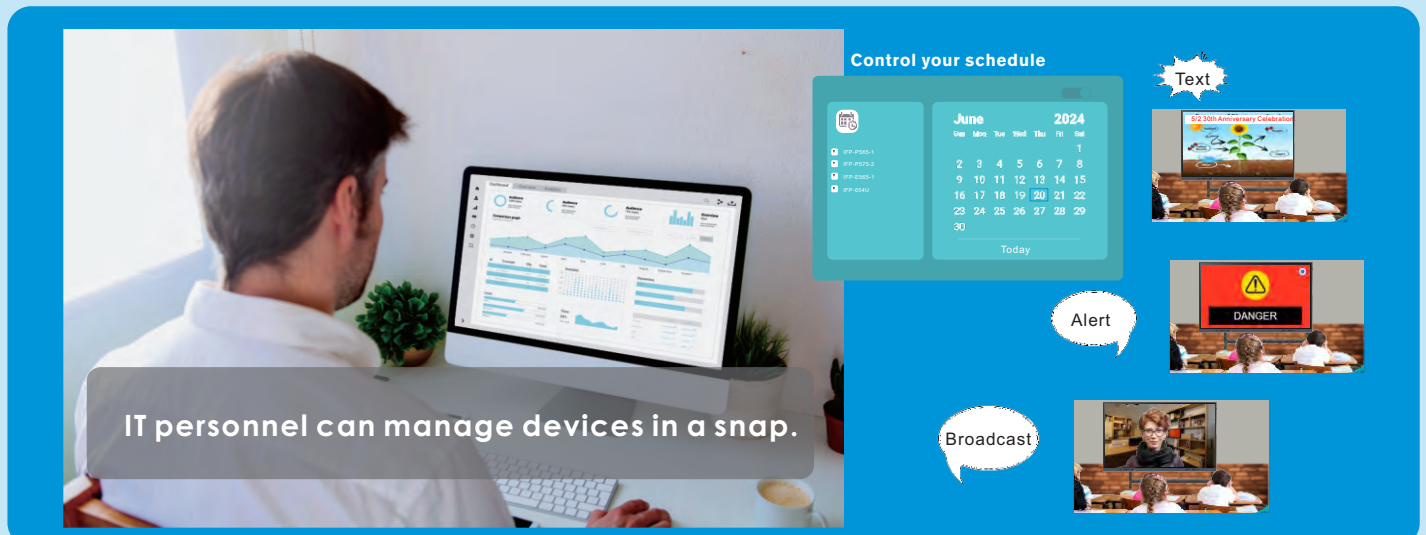
- **Ability to control various equipments.**

- **Convenient Device Management.**

- Provides a variety of commands to meet the daily management needs of IT, allowing it to manage devices efficiently and flexibly.

- **Get powerful insights and analytics.**

- View the operations information for each device in a straightforward interface, Collect and analyze statistics for useful insights or inspect panels for errors.



Find the Right Panel for your Classrooms



	ProColor P565UC	ProColor P575UC	ProColor P586UC
Overall Dimensions (W x H x D)	1,488.4 x 915.3 x 99.2 mm (58.6 x 36.0 x 3.9 in.)	1,709 x 1,039 x 98 mm (67.3 x 40.9 x 3.9 in.)	1,957 x 1,178.5 x 99.4 mm (77.1 x 46.4 x 3.9 in.)
Weight	32.25 kg (71.1 lb)	44.25 kg (97.6 lb)	54.55 kg (120.3 lb)
Active Screen Size (Diagonal)	65 in.	75 in.	86 in.
Resolution	3,840 x 2,160	3,840 x 2,160	3,840 x 2,160
Aspect Ratio	16:9	16:9	16:9
Brightness (typ)	500 cd/m ²	500 cd/m ²	500 cd/m ²
Contrast Ratio	15,000:1	15,000:1	5000:1
Viewing Angle	Hor. 178°, Ver. 178°	Hor. 178°, Ver. 178°	Hor. 178°, Ver. 178°
Backlight Life	50,000 hours		
Tracking Technology	Touch 360° Infrared	Touch 360° Infrared	Touch 360° Infrared
Touch Points	50-touch: Windows, Android & Mac; Single touch: Linux, Chrome		
Writing height	≤2mm	≤2mm	≤2mm
Accuracy	±1mm	±1mm	±1mm
Anti-Glare Glass	Yes	Yes	Yes
Palm Rejection	Yes	Yes	Yes
Input/Output	Input: HDMI 2.0 x 3, VGA x 1, Audio 3.5mm x 1, DP x 1, RJ45 x 1, TF Card x 1 Output: HDMI x 1, Audio 3.5mm x 1, SPDIF x 1, RJ45 x 1 USB: USB 2.0 x 1, USB 3.0 x 4, USB 2.0 Type-B for Touch x 2, USB Type-C x 2 Data and Control: RS232 x 1, LAN RJ45 x 1		
Sound Output	2 x 20W speaker	2 x 20W speaker	2 x 20W speaker
Sound pressure level	85dB	85dB	85dB
Microphone Quantity	8	8	8
Microphone pickup distance	0~12m	0~12m	0~12m
Camera	50M pixels	50M pixels	50M pixels
Power requirement	100 -240 VAC 50/60Hz	100 -240 VAC 50/60Hz	100 -240 VAC 50/60Hz
Power Consumption(typ.)	175W	210W	240W
Standby Power Consumption	≤0.5 W	≤0.5 W	≤0.5 W
Mounting Screw Size	M8 x 25 mm	M8 x 25 mm	M8 x 25 mm
VESA Form Factor	600 x 400 mm	800 x 400 mm	800 x 600 mm
Operating System	Android 14.0	Android 14.0	Android 14.0
CPU	A72×4+A53×4	A72×4+A53×4	A72×4+A53×4
GPU	Mali G52MC3	Mali G52MC3	Mali G52MC3
RAM	8G / 16G(Optional)	8G / 16G(Optional)	8G / 16G(Optional)
Internal storage	128G	128G	128G
Expandable Storage/Type	1TB/ TF Card	1TB/ TF Card	1TB/ TF Card
WiFi Module	WiFi 6E/Bluetooth 5.3	WiFi 6E/Bluetooth 5.3	WiFi 6E/Bluetooth 5.3
OPS Module	Optional	Optional	Optional
Software			
Note	Included	Bytello AMS	Included
Bytello Share	Included	Bytello Class Pro	Optional
Mimio DMS (Basic version)	Included	AI Tools	Optional

*Note: ProColor Series 5 flat panel can only be used horizontally in a table for 90 minutes before needing to be returned to a vertical position. They must remain in a vertical position for a minimum of 30 minutes before they can put into a tilted configuration again.

*Note: Specifications subject to change without notice .



What's in the Box

Intelligent panel, magnetic stylus x 2, remote control, wall mount (optional), HDMI cable (3 m), USB A-to-B for touch (5 m), US power cord (3 m), software licensing, display apps, warranty card, and Quick Start Guide.

